

Technical Bulletin

Genes that fit *your* farm.

SeCan

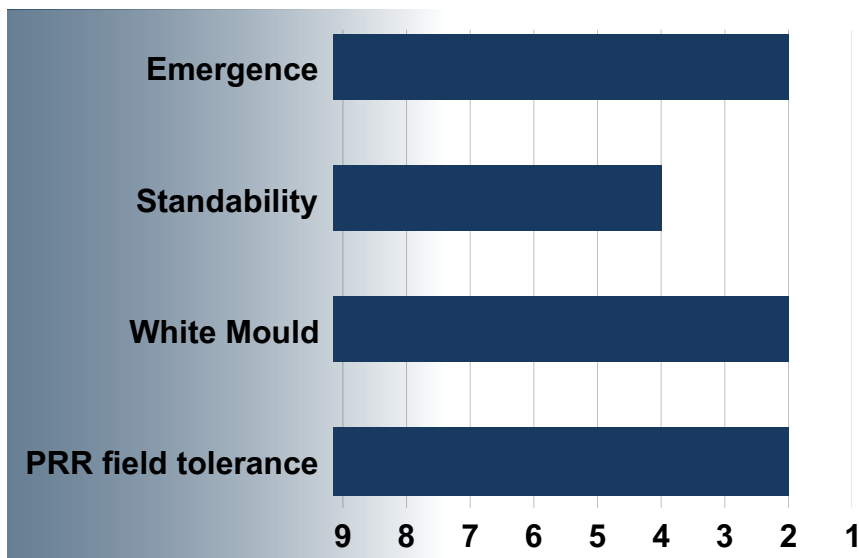
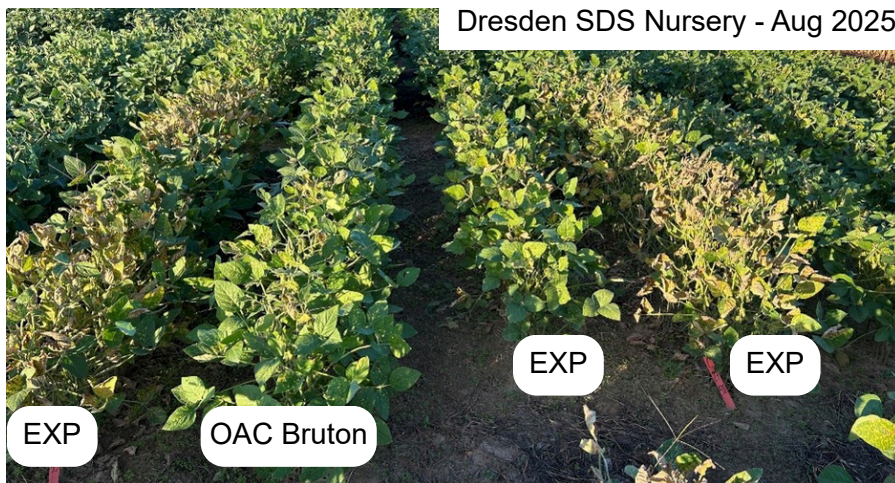
Canada's Seed Partner

OAC Bruton

January 2026

Variety Fit:

Proven yield and desired food-grade traits have made this a top-selling variety. Outstanding disease package, including SDS, PRR, and white mould, contribute to stable performance.



Rating Scale: 1-2 excellent (E), 3-4 very good (VG), 5-6 good (G), 7-8 fair (F), 9 poor (P)

Definitions: AA= Above Average, A = Average, NP = Needs Placement (Avoid placing on acres where field has a history of challenges with the assigned trait or manage accordingly)

2.0 RM, 2975 HU

Very large seed

White mould tolerance

SDS tolerance

PRR tolerance

Early season vigour

Agronomy Characteristics

Plant Height	Medium-Tall
Canopy Type	Medium
Standability	A
Maturity	2.0 RM
Emergence	AA
Row Width (Inches)	7-30
Soil Type	All
No-Till	AA

Disease Characteristics

SCN Resistance	Yes (PI 88788)
White Mould	AA
PRR Field Tolerance	AA
PRR Gene	N/A
SDS Tolerance	AA