

Orr R2X Summary

0.8 RM (2750 HU)

Current Data Package - Nov 26, 2025

Season Summary Highlights

- **Excellent emergence for variable acres**
- **Phenomenal standability and very good WM for highly productive acres**
- **Holds plant height on tougher acres**
- **Under drought stress at Port Hope, ON (OSACC trial) – One of the top performing lines in 2025**

2024/2025 Commercial Yield Data vs Dekalb

Variety	Walkerton, ON (2024 Long -MW)	Walkerton, ON (2024 Long -Schiestel)
ORR R2X	64.3	67.0
DKB 07-23	66.9	
DKB 07-59XF	60.8	
DKB 08-80	68.7	67.3

Variety	Mildmay, ON (2025)	Teeswater, ON (2025 B)	Walkerton, ON (2025 Long Shiestel)	Stormont, ON (2025)
ORR R2X	52.9	50.4	56.7	52.9
DKB 07-23	55.0	59.9	61.1	51.9
DKB 08-80		65.4	64.7	34.7
DKB 09-90XF			59.7	49.4

- Note DKB 08-80 is non-cyst
- ORR R2X provides premium performance on these traits:
 - Emergence
 - Standability
 - Plant health
 - Holds height under stress

+/- 2 RM used for comparison

2024/2025 Commercial Yield Data vs Pioneer

Variety	Walkerton, ON (2025 Long Shiestel)
ORR R2X	56.7
P09Z79E	55.9

- Limited data vs Pioneer
- ORR R2X provides premium performance on these traits:
 - Emergence
 - Standability
 - Plant health
 - Holds height under stress

+/- 2 RM used for comparison

2024/2025 Commercial Yield Data vs Pride Seeds

Variety	Vanleek Hill, ON (2024)	Walkerton, ON (2024 Long -MW)	Walkerton, ON (2024 Long -Schiestel)
ORR R2X	51.8	64.3	67.0
PS 0944 XRN	44.8	65.1	63.3
PS 1022 EN		62.0	63.3
PS 0779 XRN	50.3	62.9	62.3

Variety	Walkerton, ON (2025 Long Shiestel)	Stormont, ON (2025)
ORR R2X	56.7	52.9
PS 0944 XRN	54.5	49.4
PS 1022 EN	54.1	
PS 0779 XRN		49.1

- Strong performance vs Pride
- ORR R2X provides premium performance on these traits:
 - Emergence
 - Standability
 - Plant health
 - Holds height under stress

+/- 2 RM used for comparison

2024/2025 Commercial Yield Data vs NK

Variety	Walkerton, ON (2024 Long -MW)	Walkerton, ON (2024 Long -Schiestel)	Lucknow, ON (2024)
ORR R2X	64.3	67.0	73.7
S09-B5XF	61.1	57.2	72.5
S06-A3XF			67.5
S09-H7E3		55.9	63.4

Variety	Lucknow, ON (2025)	Walkerton, ON (2025 Long Shiestel)	Stormont, ON (2025)
ORR R2X	68.3	56.7	52.9
S07-T8XF		56.2	44.7
S08-Z4E3	65.5	56.2	38.5
S09-B5XF		53.6	
S10-H1XF		57.6	
S06-A3XF			49.4

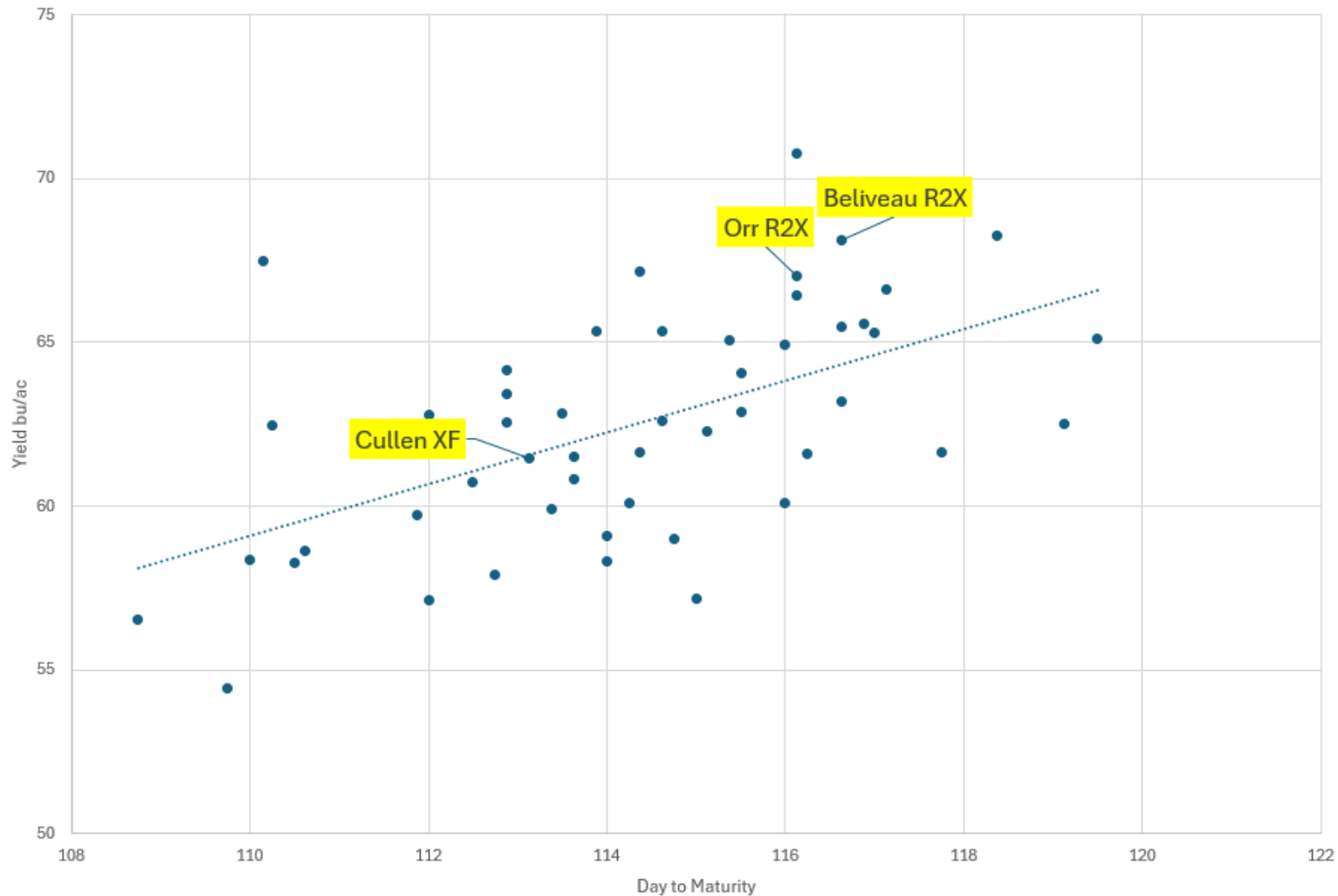
- Strong performance vs NK
- ORR R2X provides premium performance on these traits
 - Emergence
 - Standability
 - Plant health
 - Holds height under stress

+/- 2 RM used for comparison

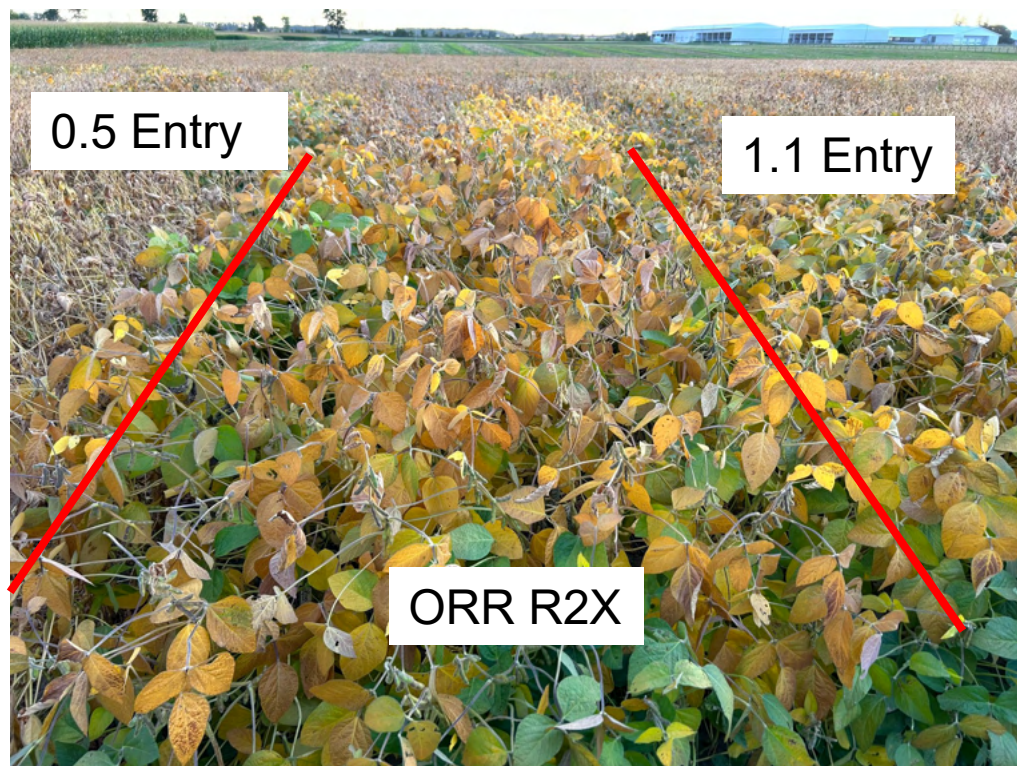
2025 OSACC Data



2024 & 2025: OSACC MG 0 (2600 HU) Yield bu/ac- 8Locations



Elora OSACC Trials – Sept 11, 2025



- ORR R2X:
 - Tall but stands extremely well
 - Limited disease at Elora vs other lines with a lot of dead leaves
 - 1.1 check (right) is lodged beside
 - 0.5 check (left) has a lot of dead leaves

Top Yielding line out of 70 entries at Elora

Excellent Drought Tolerance - Port Hope - July 31, 2025



- Orr R2X maintained height under drought stress and one of the best filling in the rows

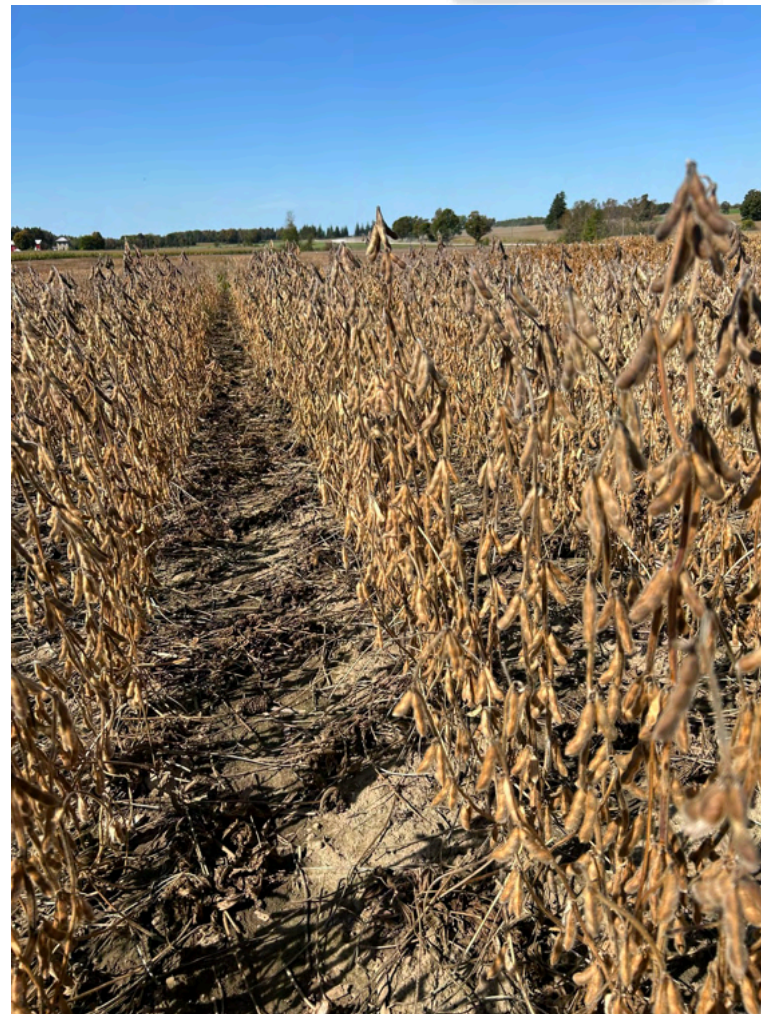
Port Hope OSACC 2025 - Orr R2X was 2nd out of 70. Beliveau R2X was number 1!

Walton, ON - Sept 2025



- Walton, ON droughted at times. Orr R2X maintained height.
- One of the top yielding lines at Walton in 2025

Walton, ON - Sept 2025



Orr R2X Branching and top pod cluster